

Light efficiency:

98 Lumen/Watt

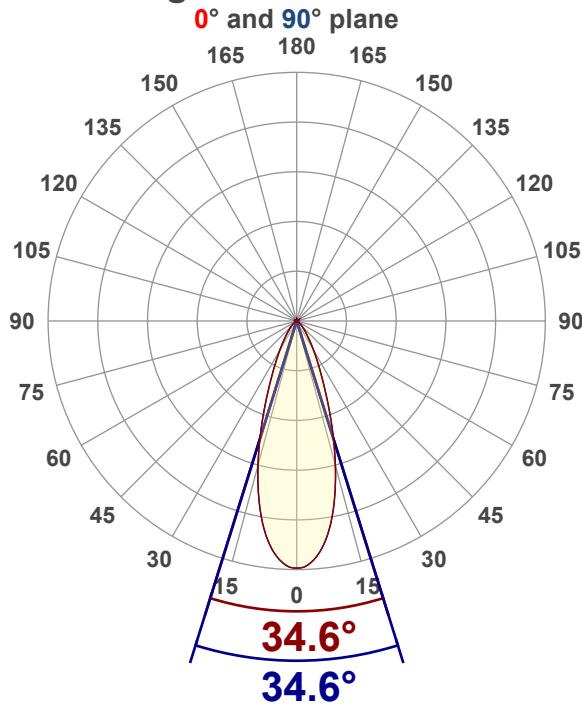
Color temperature:

4897 K

Light quality:

CRI:94.7, R_g:90.9, R_f:100.1**P: 2 / V: - / F: 2****Output: 1163 lm****Peak: 2555 cd****Power: 11.8 W****Voltage: 120 V****Current: 0.102 A****PF: 0.97****THD: 17.16 %**

Angular Distribution



Product name:

RA4-12G-90WH - 5000K

Test Date:

12/12/2025

Beam Angle (50% of the brightness of the centre):

34.6°

Field Angle (10% of the brightness of the centre):

66.1°

Cut Off Angle (2.5% of the brightness of the centre):

94.7°

Beam Details

*measured at centre of beam

Mounting Height (feet)\(meter)	Lux*	Footcandles*	Beam width (feet) / (meter)
4 ft / 1.2 m	1719 lx	160 fc	2.5 ft / 0.8 m
8 ft / 2.4 m	430 lx	40 fc	5 ft / 1.5 m
12 ft / 3.7 m	191 lx	18 fc	7.5 ft / 2.3 m
16 ft / 4.9 m	107 lx	10 fc	10 ft / 3 m
20 ft / 6.1 m	69 lx	6 fc	12.5 ft / 3.8 m

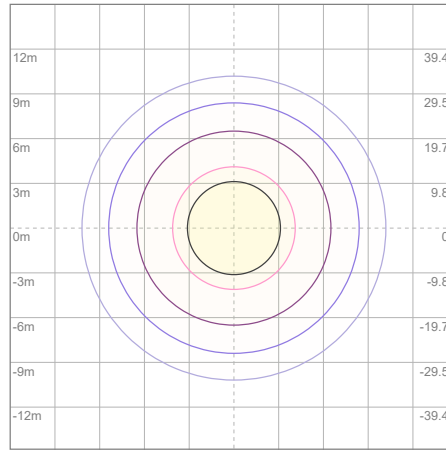
Beam center

Photometric Testing Report

Zonal Lumen Summary

Zone	Lumen	%Luminaire
0-30	914	78.59%
0-40	1048	90.11%
0-60	1139	97.94%
60-90	21.9	1.88%
70-100	8.10	0.70%
90-120	0.531	0.05%
0-90	1161	99.83%
90-180	1.74	0.15%
0-180	1163	100.00%

ISO Lux Diagram



Mounting height: 3.05 meters (10 feet)

Lux at center:	275 lx
3%	8.25 lx
5%	13.75 lx
10%	27.50 lx
30%	82.50 lx
50%	137.50 lx

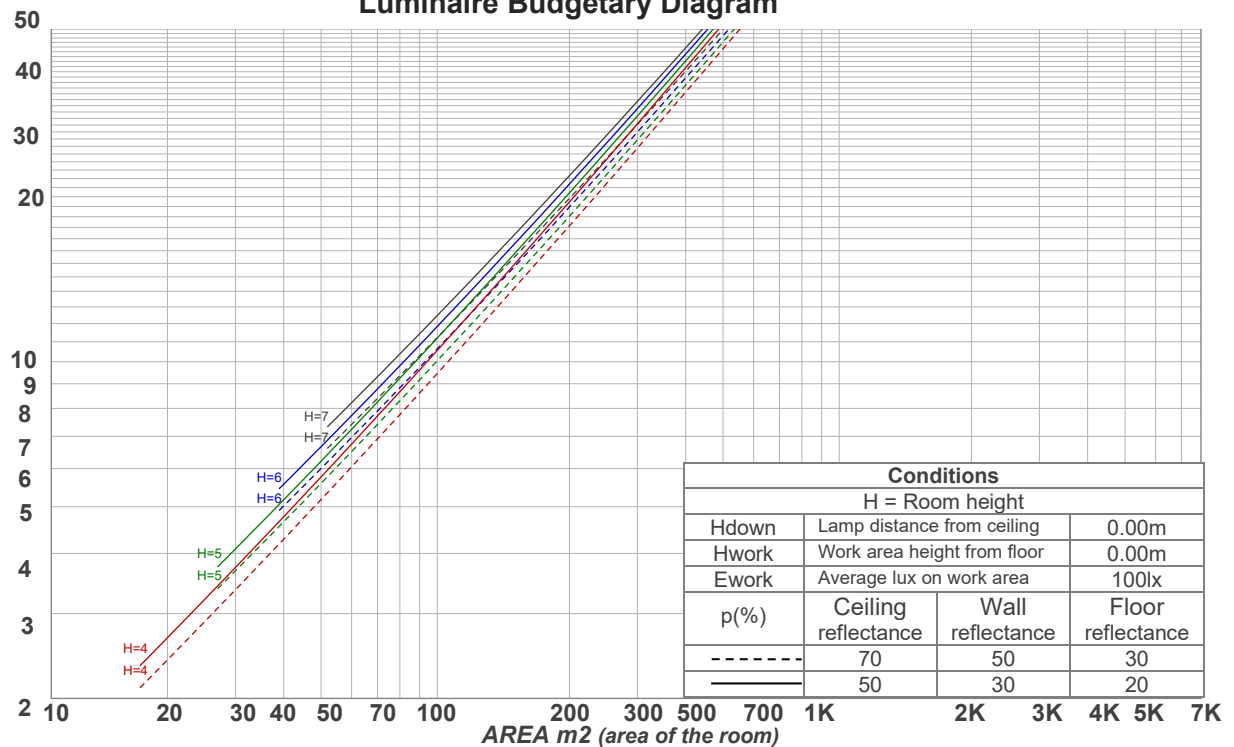
Conditions:
Number of planes: 8
Lux distribution on a surface when lamp is mounted at 3.05 meters from the surface.

Coefficients of Utilization

Ceiling reflectance	80				70				50			30			10			0
Wall reflectance	70	50	30	10	70	50	30	10	50	30	10	50	30	10	50	30	10	0
Floor reflectance	20	20	20	20	20	20	20	20	20	20	20	20	20	20	20	20	20	0
RCR	(RCR: Room Cavity Ratio) Room Values are expressed as percentage of Lumens delivered to the task surface																	
0	119	119	119	119	116	116	116	116	111	111	111	106	106	106	102	102	102	100
1	114	111	109	107	111	109	107	105	105	103	102	101	100	99	98	97	96	94
2	109	104	100	97	106	102	99	96	99	96	94	96	94	92	93	91	90	88
3	104	98	93	89	102	96	92	89	94	90	87	91	88	86	89	87	84	83
4	99	92	87	83	97	91	86	82	89	85	82	87	83	81	85	82	80	78
5	95	87	82	78	93	86	81	77	84	80	77	83	79	76	81	78	75	74
6	91	83	77	73	89	82	77	73	80	76	72	79	75	72	78	74	71	70
7	87	79	73	69	86	78	73	69	77	72	69	75	71	68	74	71	68	67
8	83	75	69	66	82	74	69	66	73	69	65	72	68	65	71	68	65	64
9	80	72	66	63	79	71	66	63	70	66	62	69	65	62	68	65	62	61
10	77	68	63	60	76	68	63	60	67	63	60	67	62	59	66	62	59	58

LAMPS (number of lamps)

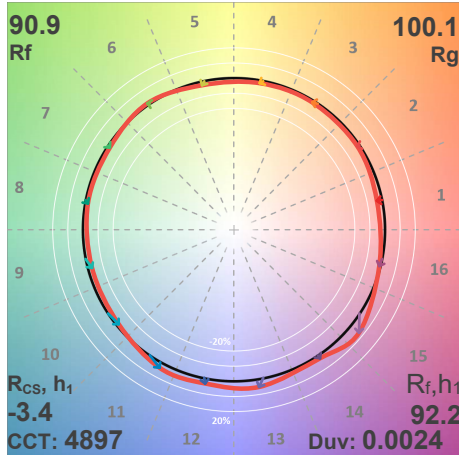
Luminaire Budgetary Diagram



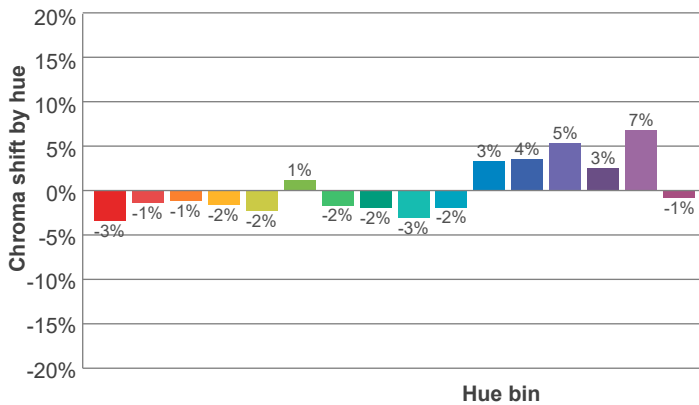
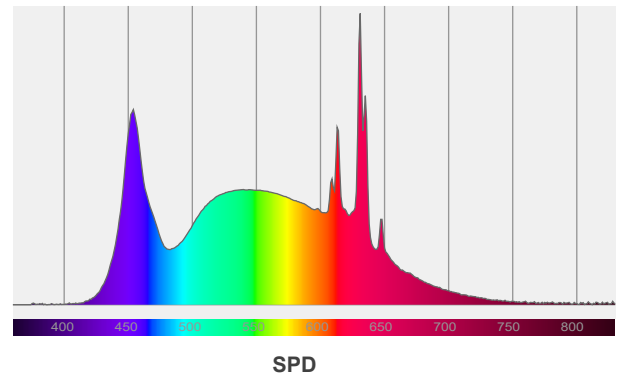
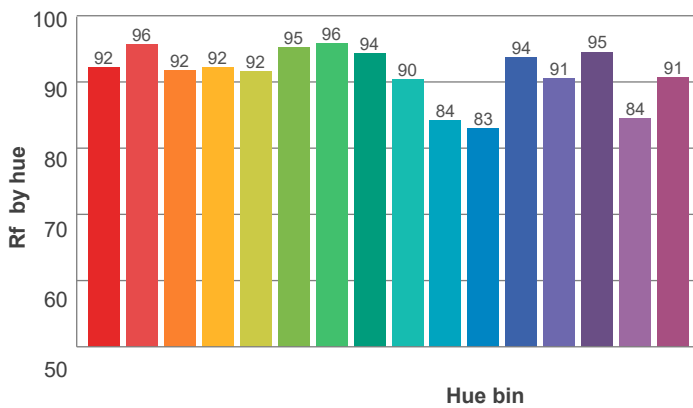
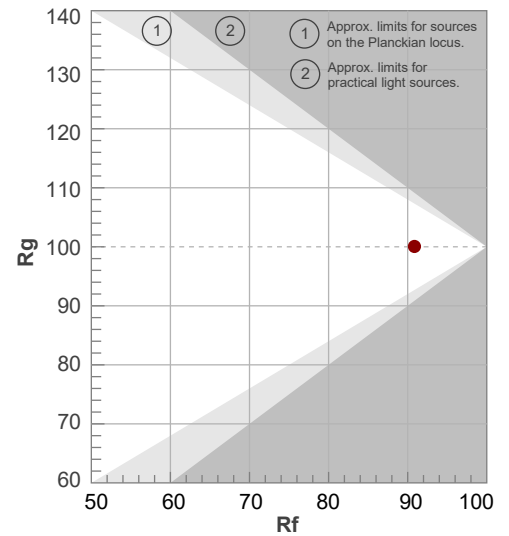
Photometric Testing Report

ANSI/IES TM-30-18

P: 2 / V: - / F: 2



Hue Bin	R _f	Shifts (%)	
		Chroma	Hue
1	92	-3%	0%
2	96	-1%	0%
3	92	-1%	4%
4	92	-2%	2%
5	92	-2%	2%
6	95	1%	1%
7	96	-2%	0%
8	94	-2%	2%
9	90	-3%	7%
10	84	-2%	10%
11	83	3%	10%
12	94	4%	1%
13	91	5%	-4%
14	95	3%	0%
15	84	7%	-11%
16	91	-1%	-5%



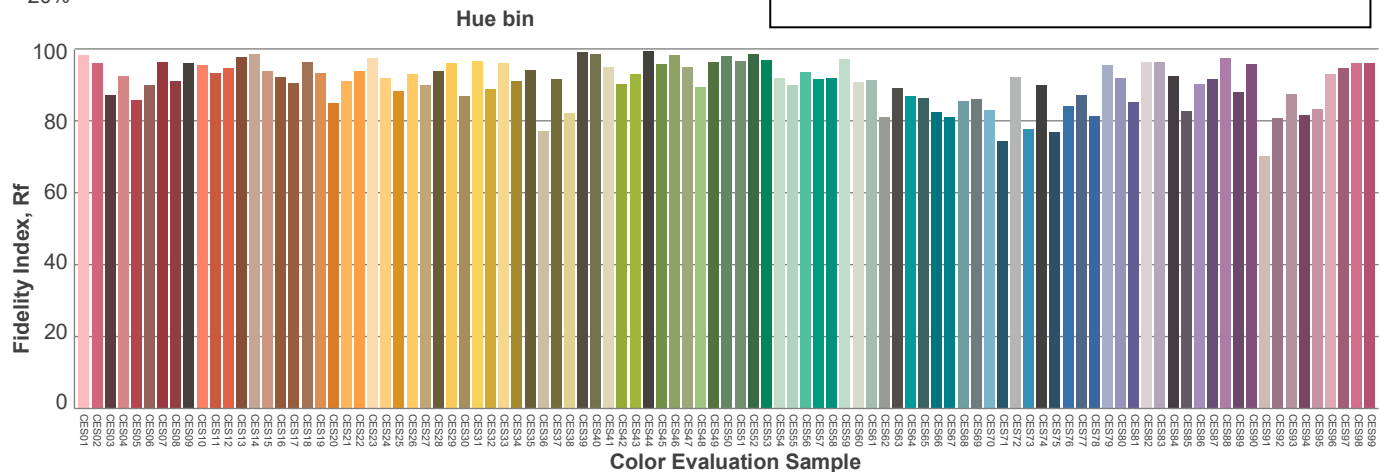
Red: 21.5%, Power=3.5mW

Blue: 18.5%, Power=13.1mW

Green: 32.5%, Power=17.3mW

UVA: 0.1%, Power=0.2mW

Dominant Wavelength: 579nm

1st Peak Wavelength: 631nm2nd Peak Wavelength: 454nm

Glare Evaluation According to UGR

p Ceiling		70	70	50	50	30	70	70	50	50	30
p Walls		50	30	50	30	30	50	30	50	30	30
p Floor		20	20	20	20	20	20	20	20	20	20
Room size X Y		Viewing direction at right angles to lamp axis					Viewing direction parallel to lamp axis				
2H	2H	21.3	21.9	21.4	22.1	22.3	21.3	21.9	21.4	22.1	22.3
	3H	21.4	22.1	21.8	22.3	22.5	21.4	22.1	21.8	22.3	22.5
	4H	21.4	22.1	21.8	22.4	22.6	21.4	22.1	21.8	22.4	22.6
	6H	21.5	22.1	21.8	22.4	22.8	21.5	22.1	21.8	22.4	22.8
	8H	21.5	22.1	21.9	22.4	22.8	21.5	22.1	21.9	22.4	22.8
	12H	21.5	22.0	21.8	22.4	22.8	21.5	22.0	21.8	22.4	22.8
4H	2H	21.2	21.9	21.6	22.1	22.3	21.2	21.9	21.6	22.1	22.3
	3H	21.5	22.1	21.9	22.4	22.8	21.5	22.1	21.9	22.4	22.8
	4H	21.6	22.1	22.0	22.5	23.0	21.6	22.1	22.0	22.5	23.0
	6H	21.7	22.2	22.2	22.5	22.9	21.7	22.2	22.2	22.5	22.9
	8H	21.7	22.2	22.2	22.5	22.9	21.7	22.2	22.2	22.5	22.9
	12H	21.6	22.0	22.1	22.4	22.9	21.6	22.0	22.1	22.4	22.9
8H	4H	21.6	22.1	22.1	22.4	22.8	21.6	22.1	22.1	22.4	22.8
	6H	21.7	22.0	22.2	22.5	23.0	21.7	22.0	22.2	22.5	23.0
	8H	21.8	22.0	22.3	22.6	23.2	21.8	22.0	22.3	22.6	23.2
	12H	21.8	22.0	22.4	22.5	23.1	21.8	22.0	22.4	22.5	23.1
12H	4H	21.5	21.9	22.0	22.3	22.8	21.5	21.9	22.0	22.3	22.8
	6H	21.7	22.0	22.3	22.5	23.1	21.7	22.0	22.3	22.5	23.1
	8H	21.8	22.0	22.4	22.5	23.1	21.8	22.0	22.4	22.5	23.1
Variation of the observer position for the luminaire distance S											
S = 1.0H		2.4 / -2.1					2.4 / -2.1				
S = 1.5H		4.4 / -3.0					4.4 / -3.0				
S = 2.0H		6.1 / -3.6					6.1 / -3.6				
Standard table		n/a					n/a				
Correction summand		n/a					n/a				
Corrected glare indices referring to 1163 lm total luminous flux											

Due to our continued efforts to improve our products, product specifications are subject to change without notice. Please refer to our website for the latest test results.